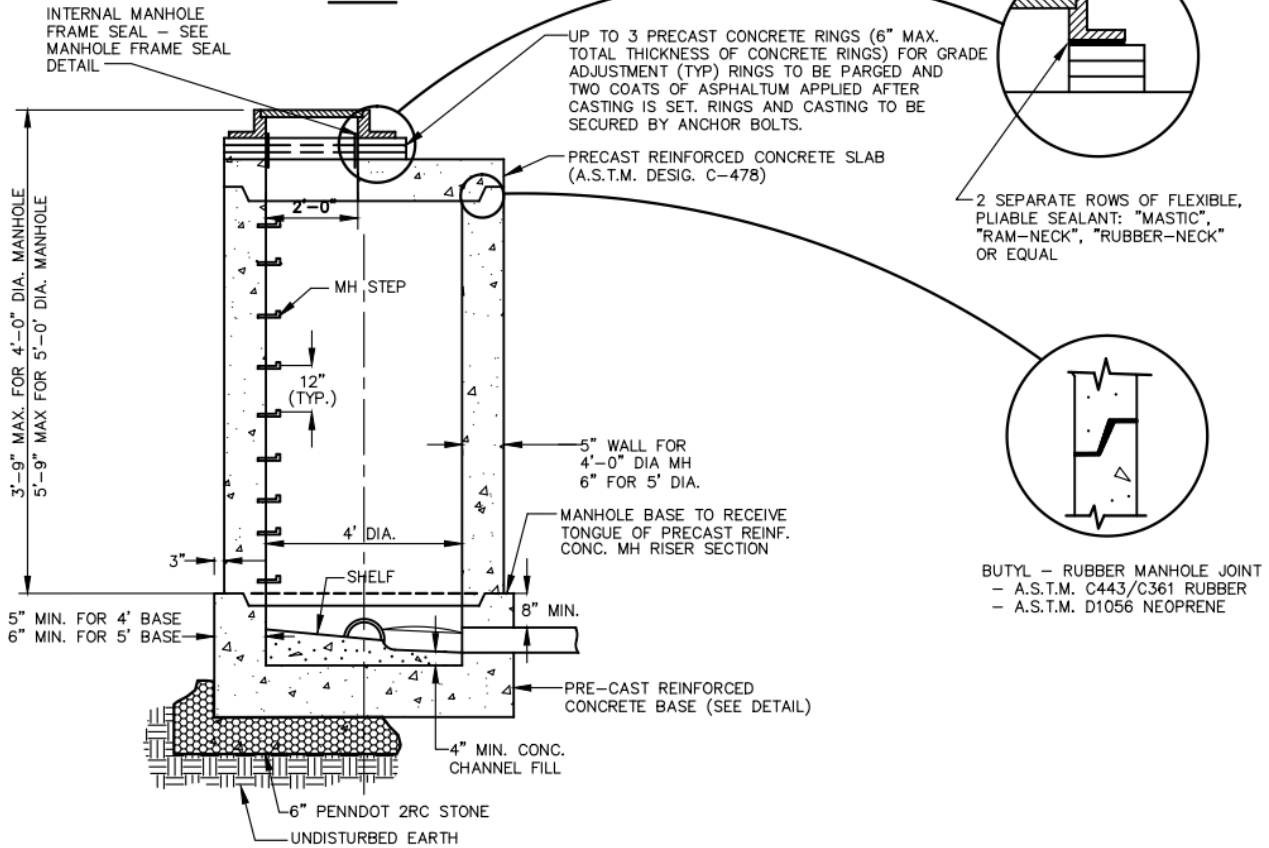
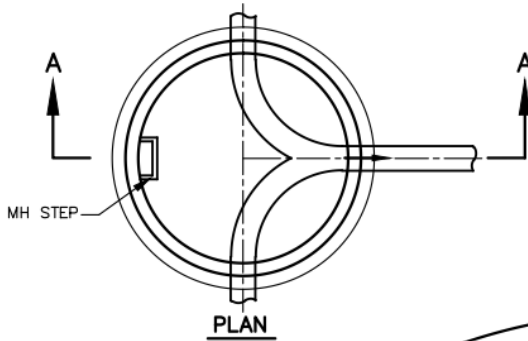


NOTES:

1. THE DEPTH OF THE INVERT CHANNEL SHALL BE EQUAL TO $\frac{3}{4}$ OF THE DIAMETER OF THE SEWER.
2. THE SHELF SHALL SLOPE TOWARD THE INVERT CHANNEL AT A
3. TYPE "B" MANHOLES (SHALLOW TYPE) TO BE PROVIDED WHERE REQUIRED BY DEPTH CONDITIONS. ALL OTHER MANHOLES TO BE TYPE "A".
4. THE WALL THICKNESS IN A 4'-0" DIA. PRECAST BASE SHALL BE AS FOLLOWS FOR PIPES 16" AND SMALLER, 5" WALL; FOR PIPES 18" AND LARGER, 8" WALL.
5. ALL MANHOLE FRAMES FOR "OFF THE ROAD" MANHOLES SHALL BE BOLTED TO THE CONE SECTION OR CONCRETE SLAB WITH 2'- $\frac{3}{4}$ " DIA. BOLTS WITH WASHERS AND NUTS; BOLTS TO BE AT 180° ON A 36" DIA. BOLT CIRCLE.
6. FOR MANHOLES HAVING 5'-0" DIA AND 6'-0" BASES REDUCTION IN DIAMETER TO 4'-0" SHALL START AT THE FIRST JOINT ABOVE THE UPPERMOST PIPE CONNECTION TO WALL, WHERE DEPTH IS SUFFICIENT.



SECTION A-A

TYPE "B"

STANDARD MANHOLE DETAIL

NOT TO SCALE

TYPE "B" STANDARD MANHOLE

PREPARED FOR:

PERKASIE REGIONAL AUTHORITY

ANDERSEN
ENGINEERING
ASSOCIATES
INCORPORATED

306 NORTH FIFTH STREET, PERKASIE, PA
(215) 257-5711

DSN BY:	P.C.A.
CHK BY:	P.C.A.
DATE:	3/18/96
DWG NO.	PRA-S03